



POWERMAST WALL-TIED SYSTEM

With a working height up to 200 feet (60.96 m), the PowerMast wall-tied system offers stable access at the range and scale of traditional scaffolds, but with the quick ascent ability of mast climbers.

EFFICIENT

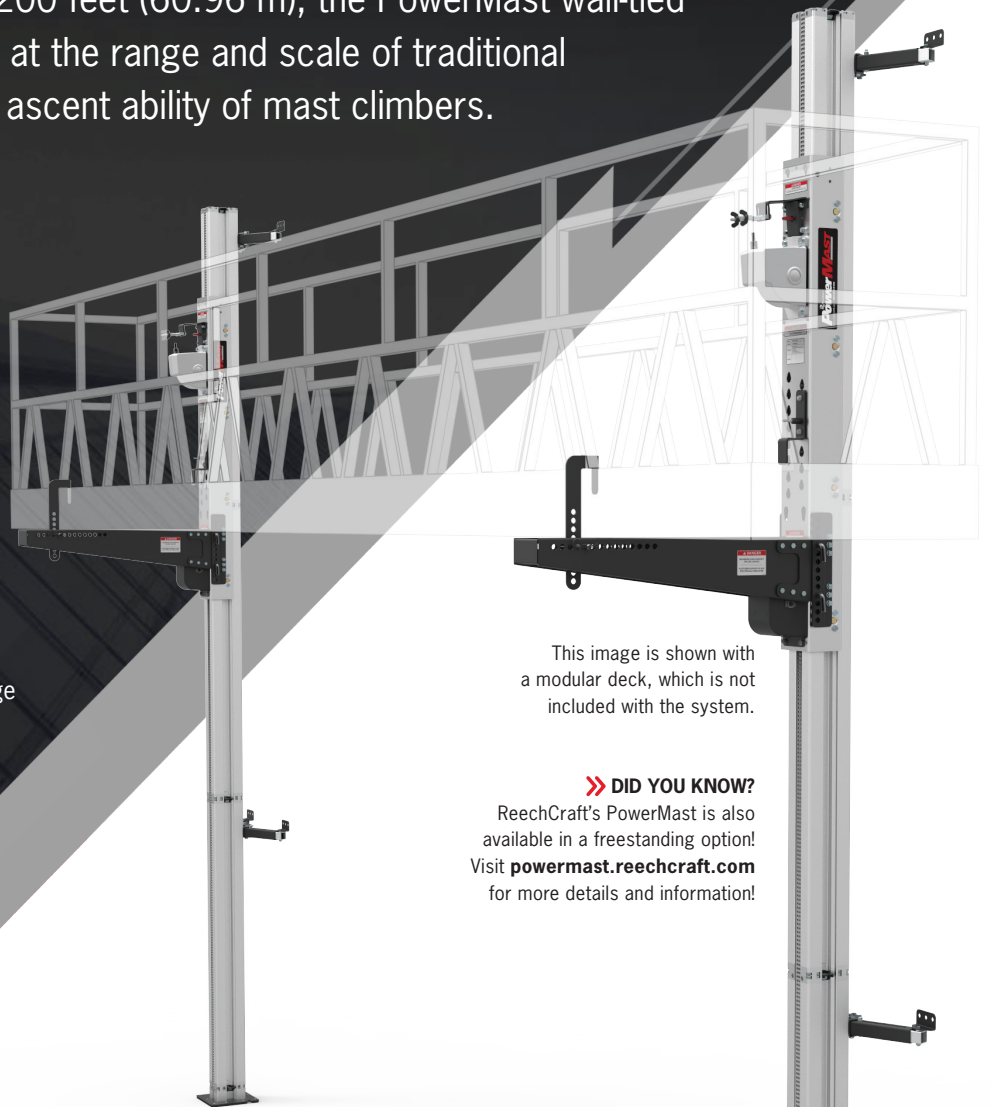
- 25 FPM mast climbing speed
- Height adjustable while in use
- Up to 1,500 lb (680 kg) weight capacity
- Custom configurations available for unique applications

FAST SETUP, FAST ACCESS

- Set up in as little as 15 minutes
- Powered by 1/2 in. 8 amp electric drill
- Erected from ground up, unlike swing stage

EASY TRANSPORT

- Easily fits in back of truck or van
- Compact and stable base plate
- Stackable aluminum mast sections



This image is shown with a modular deck, which is not included with the system.

>> DID YOU KNOW?

ReechCraft's PowerMast is also available in a freestanding option! Visit powermast.reechcraft.com for more details and information!



» POWERMAST SPECIFICATIONS

| GENERAL SPECIFICATIONS | |
|--|--|
| Platform Support Dimensions (Twin) | Up to 30 in. (762 mm) Wide Platform Deck |
| Minimum/Maximum Platform Length (Twin) | Any within 1500 lb (680 kg) System Capacity |
| Platform Dimensions (Single) | 30 in. (762 mm) x 6.5 ft (1.98 m) |
| Maximum Platform Height | 194 ft (59.1 m) |
| Maximum Working Height | 200 ft (60.96 m)* |
| Maximum Load Capacity (Twin) | 1500 lb (680 kg) (750 lb (340 kg) per Mast) |
| Maximum Tie Spacing | 15 ft (4.57 m) |
| Maximum Climbing Speed | 25 ft/min (7.6 m/min) |
| Drive System | 120:1 Clutch Protected Transmission |
| Operating System | 1/2-inch 8 Amp Minimum Drill Motor |
| Required Voltage | 110 VAC Single Phase |
| Safety Devices | Lock Lever, Overload Clutch, Overspeed Brake |
| Climbing Unit Weight | 65 lbs (29 kg) |
| 32 in. (813 mm) Mast Weight | 19 lbs (9 kg) |
| 5 ft (1.52 m) Mast Weight | 32 lbs (15 kg) |
| Tie Weight | 7 lbs (3 kg) |
| Tie Pullout Force | 750 lbs (340 kg) per Tie |
| Mast Section | 5 in. (127 mm) x 6 in. (152 mm) Aluminum with Galvanized Steel Track |
| Mast Connection Type | Interference Locking Cam |
| Base Plate Dimension | 10 in. (254 mm) x 10 in. (254 mm) Steel/Rubber |
| Total Weight on Base Plate | 2150 lbs (975 kg) |
| Surface Area of Base Plate | 100 sq. in. (645 sq. cm) |
| Surface Pressure from Base Plate | 21.5 lbs/sq. in. (1.5 kg/sq. cm) |

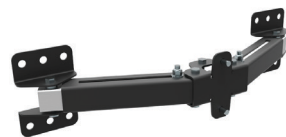
*Based on platform height plus 6 ft (1.8 m). **Note:** Specifications subject to change without notice.

ACCESSORIES + FEATURES



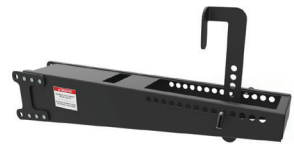
CLIMBING UNIT ▴

The climbing unit features a lock lever, an overspeed brake to automatically stop the platform in the event of overspeed, and a gearbox with an overload clutch. It is drill operated to eliminate typical electrical components.



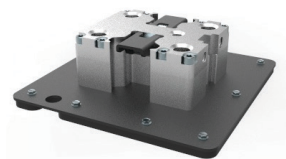
ADJUSTABLE TIE ▴

The tie provides a wide variety of attachment options for the PowerMast system and allows the PowerMast to adapt quickly to various wall types.



PLATFORM SUPPORT ▴

Fastening to the climbing unit with four quick-locking pins, the adjustable platform support accommodates most platforms and rail systems.



BASE FOOT ▴

The base foot uses the same quick connection as the masts, can be anchored to the ground, and provides a bottom stop for the climbing unit.



▴ REECHCRAFT.COM 888-600-6160 MADE IN THE USA
4028361

» TWIN MAST WALL-TIED SYSTEM REQUIRED COMPONENTS

| HEIGHT | 20 ft (6.1 m) | 40 ft (12.19 m) | 60 ft (18.29 m) | 80 ft (24.38 m) | 100 ft (30.48 m) | 120 ft (36.58 m) | 140 ft (42.67 m) | 160 ft (48.77 m) | 180 ft (54.86 m) | 200 ft (60.96 m) |
|----------------------|------------------|--------------------|--------------------|--------------------|---------------------|---------------------|---------------------|---------------------|---------------------|---------------------|
| COMPONENT | QTY | QTY | QTY | QTY | QTY | QTY | QTY | QTY | QTY | QTY |
| Climbing Unit | 2 | 2 | 2 | 2 | 2 | 2 | 2 | 2 | 2 | 2 |
| Platform Support | 2 | 2 | 2 | 2 | 2 | 2 | 2 | 2 | 2 | 2 |
| Adjustable Tie | 4 | 6 | 8 | 12 | 14 | 16 | 20 | 24 | 28 | 32 |
| 32 in. (813 mm) Mast | 0 | 0 | 0 | 0 | 0 | 0 | 0 | 0 | 0 | 0 |
| 5 ft (1.52 m) Mast | 8 | 16 | 24 | 36 | 40 | 48 | 56 | 64 | 72 | 80 |
| Base Foot | 2 | 2 | 2 | 2 | 2 | 2 | 2 | 2 | 2 | 2 |

Note: For a single mast system, use half the quantity of each component. Specifications subject to change without notice.